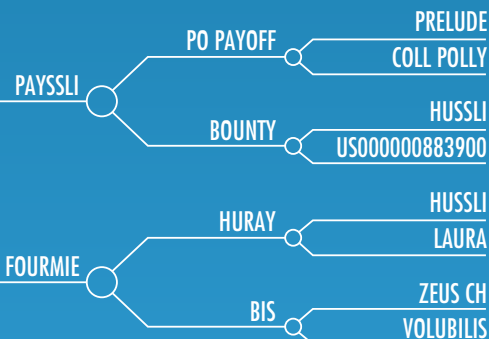


HAMSTER

FRI533251350 - BSFRA001533251350 11/14/2012



THE STAMP OF PAYSSLI

- Leader on Milk and type
- Good healthy udders
- Milking speed and Longevity



FOURMIE, dam of HAMSTER



HAMSTER

PPR 149

PRODUCTION 61% Rel. / 0 dtrs / 0 herds

Milk (lbs)	1232
Fat (lbs)	44
% Fat	-0.03
Protein (lbs)	32
% Protein	-0.04
Combined Fat and Protein	76
Net Merit (\$)	397
Fluid Merit (\$)	365
Cheese Merit (\$)	394
Grazing Merit (\$)	409

EFI : 0.0 gEFI : 5.3

KCAS : BB BCAS : A2A2

HEALTH AND REPRODUCTION

Somatic Cell Score	2.89
Productive Life	3.4
Daughter Pregnancy Rate	0.8
Heifer Conception Rate	-0.8
Cow Conception Rate	1.4
Sire Calving Ease	5.3
Daughter Calving Ease	3.8

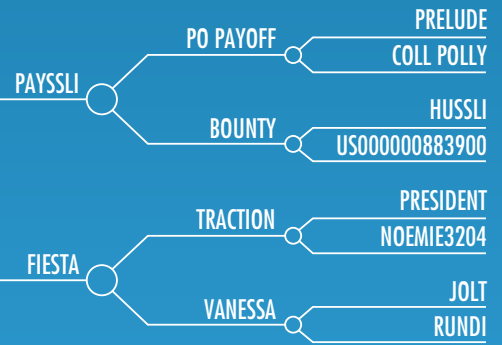
CONFORMATION

Rel. 58

Type	-0.2	
Udder Composite	0.24	
Mobility	0.00	
Foot & Leg Composite	0.39	
Stature	0.9	
Strength	-0.4	
Dairy Form	0.2	
Rump Angle	0.5	
Thurl Width	-0.2	
Rear Legs Side View	-0.1	
Rear Legs Rear View	-0.1	
Foot Angle	0.3	
Fore Udder Attachment	0.4	
Rear Udder Height	0.5	
Rear Udder Width	0.1	
Udder Cleft	0.0	
Udder Depth	0.2	
Fore Teat Placement	0.0	
Teat Length	1.4	

HAYSSLI

FR5502084989 - BSFRA005502084989 10/29/2012



FIESTA, dam of HAYSSLI



HAYSSLI

PPR 105

PRODUCTION 63% Rel. / 0 dtrs / 0 herds

Milk (lbs)	845
Fat (lbs)	29
% Fat	-0.03
Protein (lbs)	27
% Protein	0.00
Combined Fat and Protein	56
Net Merit (\$)	260
Fluid Merit (\$)	206
Cheese Merit (\$)	262
Grazing Merit (\$)	256

EFI : 0.0 gEFI : 7.2

KCAS : BB

HEALTH AND REPRODUCTION

Somatic Cell Score	3.01
Productive Life	2.4
Daughter Pregnancy Rate	-1.0
Heifer Conception Rate	-0.9
Cow Conception Rate	-0.1
Sire Calving Ease	6.2
Daughter Calving Ease	4.0

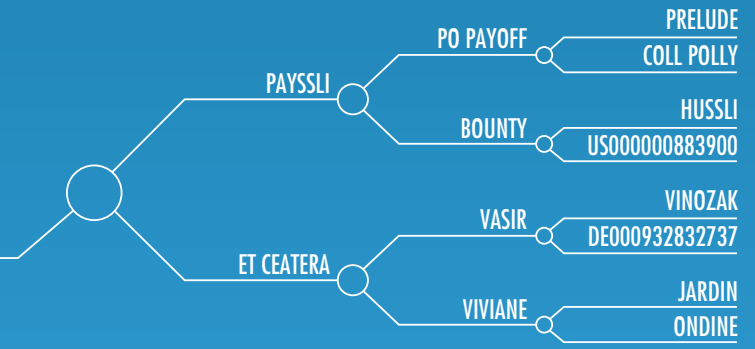
CONFORMATION

Rel. 62

Type	0.7	
Udder Composite	0.81	
Mobility	0.00	
Foot & Leg Composite	0.64	
Stature	1.2	
Strength	0.4	
Dairy Form	0.1	
Rump Angle	0.7	
Thurl Width	-0.1	
Rear Legs Side View	-0.4	
Rear Legs Rear View	0.1	
Foot Angle	0.4	
Fore Udder Attachment	1.6	
Rear Udder Height	1.6	
Rear Udder Width	0.1	
Udder Cleft	-0.4	
Udder Depth	0.7	
Fore Teat Placement	0.9	
Teat Length	-0.2	

HARD ROCK

FR1211094401 - BSFRA001211094401 01/06/2012



ET CEATERA, dam of HARD ROCK



HARD ROCK

PPR 107

PRODUCTION 77% Rel. / 49 dtrs / 37 herds

Milk (lbs)	358
Fat (lbs)	28
% Fat	0.06
Protein (lbs)	27
% Protein	0.07
Combined Fat and Protein	55
Net Merit (\$)	279
Fluid Merit (\$)	261
Cheese Merit (\$)	310
Grazing Merit (\$)	209

EFI : 5.4 gEFI : 7.0

KCAS : BB

HEALTH AND REPRODUCTION

Somatic Cell Score	2.87
Productive Life	1.6
Daughter Pregnancy Rate	0.2
Heifer Conception Rate	-0.5
Cow Conception Rate	2.3
Sire Calving Ease	6.2
Daughter Calving Ease	5.0

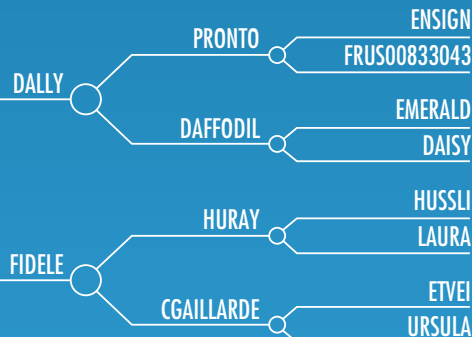
CONFORMATION

Rel. 74

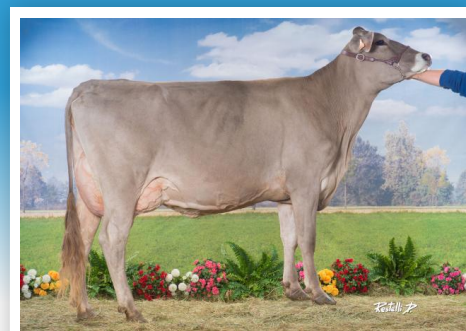
Type	0.3	
Udder Composite	0.27	
Mobility	0.00	
Foot & Leg Composite	0.27	
Stature	0.8	
Strength	0.5	
Dairy Form	0.1	
Rump Angle	0.2	
Thurl Width	0.2	
Rear Legs Side View	-0.6	
Rear Legs Rear View	-0.2	
Foot Angle	0.0	
Fore Udder Attachment	0.5	
Rear Udder Height	-0.1	
Rear Udder Width	0.5	
Udder Cleft	-0.2	
Udder Depth	0.6	
Fore Teat Placement	0.0	
Teat Length	-1.6	

HARMONICA

FR2138706818 - BSFRA002138706818 10/04/2012



LIMACE, daughter of HARMONICA



FIDELE, dam of HARMONICA

PPR 91

PRODUCTION 59% Rel. / 0 dtrs / 0 herds

Milk (lbs)	216
Fat (lbs)	15
% Fat	0.03
Protein (lbs)	21
% Protein	0.06
Combined Fat and Protein	36
Net Merit (\$)	206
Fluid Merit (\$)	209
Cheese Merit (\$)	234
Grazing Merit (\$)	143

EFI : 0.0 gEFI : 4.8

KCAS : BB

HEALTH AND REPRODUCTION

Somatic Cell Score	2.89
Productive Life	1.5
Daughter Pregnancy Rate	1.5
Heifer Conception Rate	0.1
Cow Conception Rate	0.5
Sire Calving Ease	6.6
Daughter Calving Ease	4.8

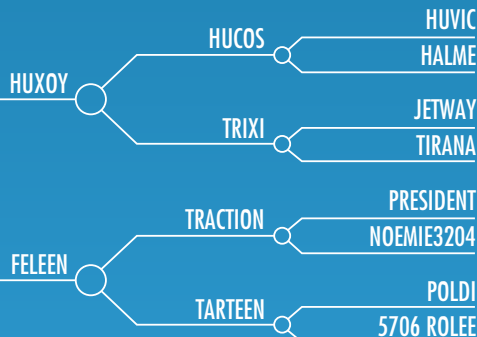
CONFORMATION

Rel. 58

Type	0.4	0.4
Udder Composite	0.28	0.28
Mobility	0.00	0.00
Foot & Leg Composite	1.00	1.00
Stature	1.9	1.9
Strength	0.7	0.7
Dairy Form	-0.8	-0.8
Rump Angle	0.5	0.5
Thurl Width	0.9	0.9
Rear Legs Side View	0.3	0.3
Rear Legs Rear View	0.1	0.1
Foot Angle	1.0	1.0
Fore Udder Attachment	0.3	0.3
Rear Udder Height	-0.3	-0.3
Rear Udder Width	-0.6	-0.6
Udder Cleft	1.2	1.2
Udder Depth	0.9	0.9
Fore Teat Placement	1.1	1.1
Teat Length	0.0	0.0

HUXION GNR

FR2146132039 - BSFRA002146132039 08/12/2012



FELEEN, dam of HUXION GNR



HUXION GNR

PPR 103

PRODUCTION 62% Rel. / 0 dtrs / 0 herds

Milk (lbs)	533
Fat (lbs)	9
% Fat	-0.05
Protein (lbs)	20
% Protein	0.01
Combined Fat and Protein	29
Net Merit (\$)	328
Fluid Merit (\$)	315
Cheese Merit (\$)	337
Grazing Merit (\$)	308

EFI : 0.0 gEFI : 5.6

KCAS : BB BCAS : A2A2

HEALTH AND REPRODUCTION

Somatic Cell Score	2.93
Productive Life	7.2
Daughter Pregnancy Rate	2.5
Heifer Conception Rate	0.2
Cow Conception Rate	1.1
Sire Calving Ease	3.9
Daughter Calving Ease	5.0

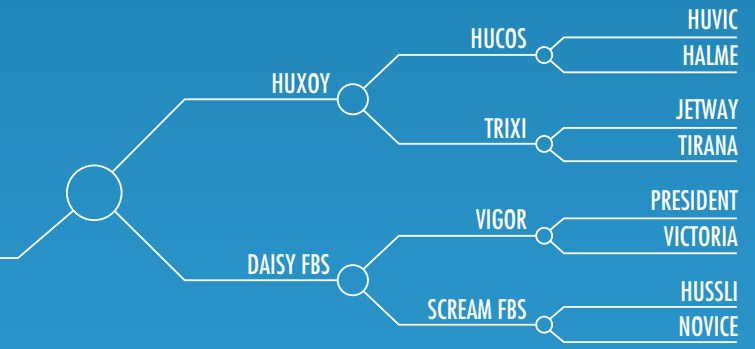
CONFORMATION

Rel. 59

Type	0.1	
Udder Composite	0.25	
Mobility	0.00	
Foot & Leg Composite	0.59	
Stature	-0.4	
Strength	-0.5	
Dairy Form	0.0	
Rump Angle	1.2	
Thurl Width	0.1	
Rear Legs Side View	-0.3	
Rear Legs Rear View	0.5	
Foot Angle	0.4	
Fore Udder Attachment	0.2	
Rear Udder Height	0.5	
Rear Udder Width	0.0	
Udder Cleft	0.2	
Udder Depth	0.5	
Fore Teat Placement	0.1	
Teat Length	-0.6	

HUGOR FBS

FR2916309184 - BSFRA002916309184 06/10/2012



JUST'IN, daughter of HUGOR FBS



DAISY FBS, dam of HUGOR FBS

PPR 131

PRODUCTION 76% Rel. / 51 dtrs / 39 herds

Milk (lbs)	1170
Fat (lbs)	25
% Fat	-0.09
Protein (lbs)	36
% Protein	-0.01
Combined Fat and Protein	61
Net Merit (\$)	303
Fluid Merit (\$)	240
Cheese Merit (\$)	305
Grazing Merit (\$)	298

EF1 : 4.9 gEF1 : 5.4

KCAS : BB BCAS : A2A2

HEALTH AND REPRODUCTION

Somatic Cell Score	3.00
Productive Life	5.1
Daughter Pregnancy Rate	0.0
Heifer Conception Rate	-0.3
Cow Conception Rate	0.2
Sire Calving Ease	7.5
Daughter Calving Ease	7.1

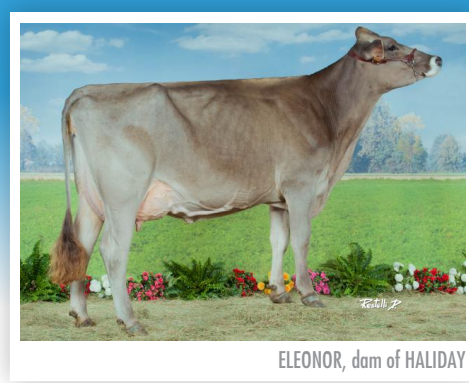
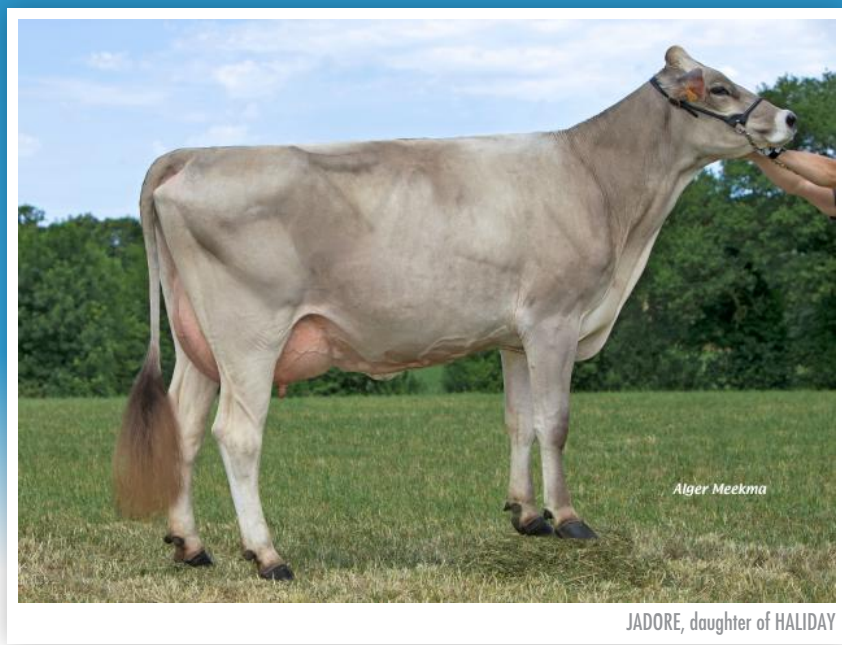
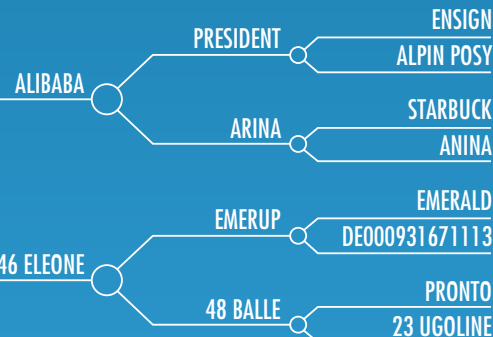
CONFORMATION

Rel. 71

Type	-0.3	
Udder Composite	0.11	
Mobility	0.00	
Foot & Leg Composite	0.77	
Stature	-1.0	
Strength	-0.3	
Dairy Form	-1.0	
Rump Angle	0.4	
Thurl Width	-0.1	
Rear Legs Side View	-0.7	
Rear Legs Rear View	0.0	
Foot Angle	0.4	
Fore Udder Attachment	-0.6	
Rear Udder Height	0.5	
Rear Udder Width	0.5	
Udder Cleft	0.7	
Udder Depth	-0.7	
Fore Teat Placement	-0.7	
Teat Length	1.4	

HALIDAY

FR2150580562 - BSFRA002150580562 06/12/2012



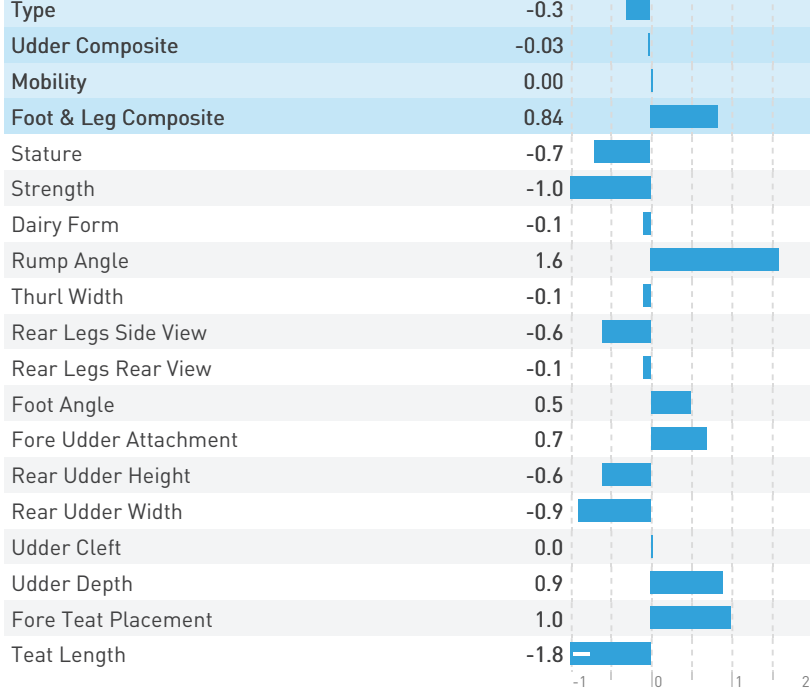
PPR 67

PRODUCTION		68% Rel. / 50 dtrs / 34 herds
Milk (lbs)	471	
Fat (lbs)	18	
% Fat	0.00	
Protein (lbs)	12	
% Protein	-0.02	
Combined Fat and Protein	30	
Net Merit (\$)	275	
Fluid Merit (\$)	243	
Cheese Merit (\$)	275	
Grazing Merit (\$)	277	
EFI : 6.3		gEFI : 0.0
KCAS : AB		

HEALTH AND REPRODUCTION	
Somatic Cell Score	2.88
Productive Life	4.0
Daughter Pregnancy Rate	0.4
Heifer Conception Rate	0.3
Cow Conception Rate	0.6
Sire Calving Ease	5.3
Daughter Calving Ease	4.3

CONFORMATION

Rel. 72



© SERVICE COMMUNICATION EVOLUTION 2017

